

OFFICINA **BORSELLI S.R.L.**

OFFICINA MECCANICA STAMPAGGIO E FABBRICAZIONE STAMPI



pressing
plate
stamped plate
metal
construction
building mould
matrix
swage
machine shop
precision

OFFICINA BORSELLI

The mould construction department is equipped with CNC machinery of last generation (CAD-CAM design systems, CNC machining centers, wire EDM, grinding).

The service of support and advice offered to the customer for the optimization of the production process have always been a distinguishing feature of our business.

HISTORY

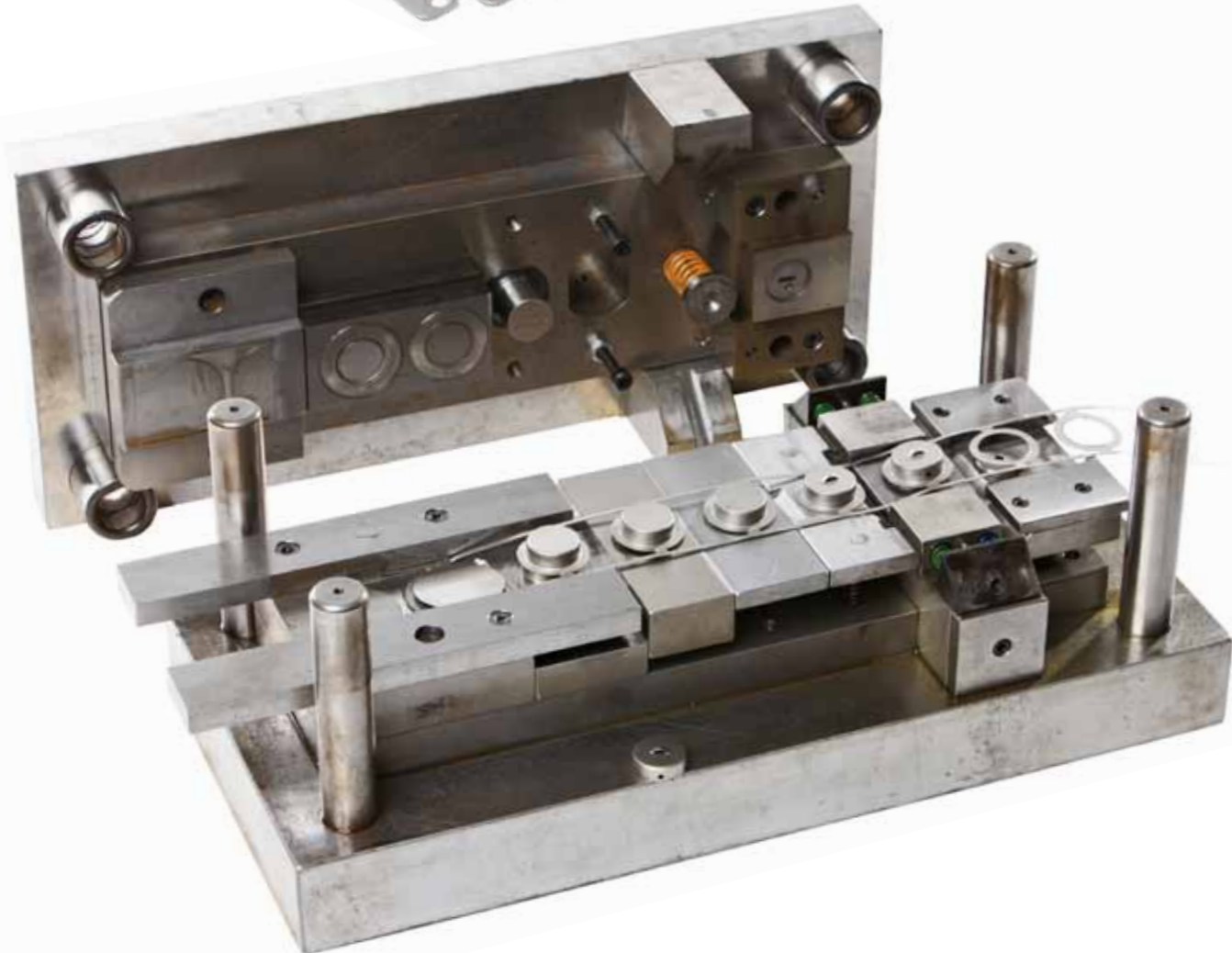
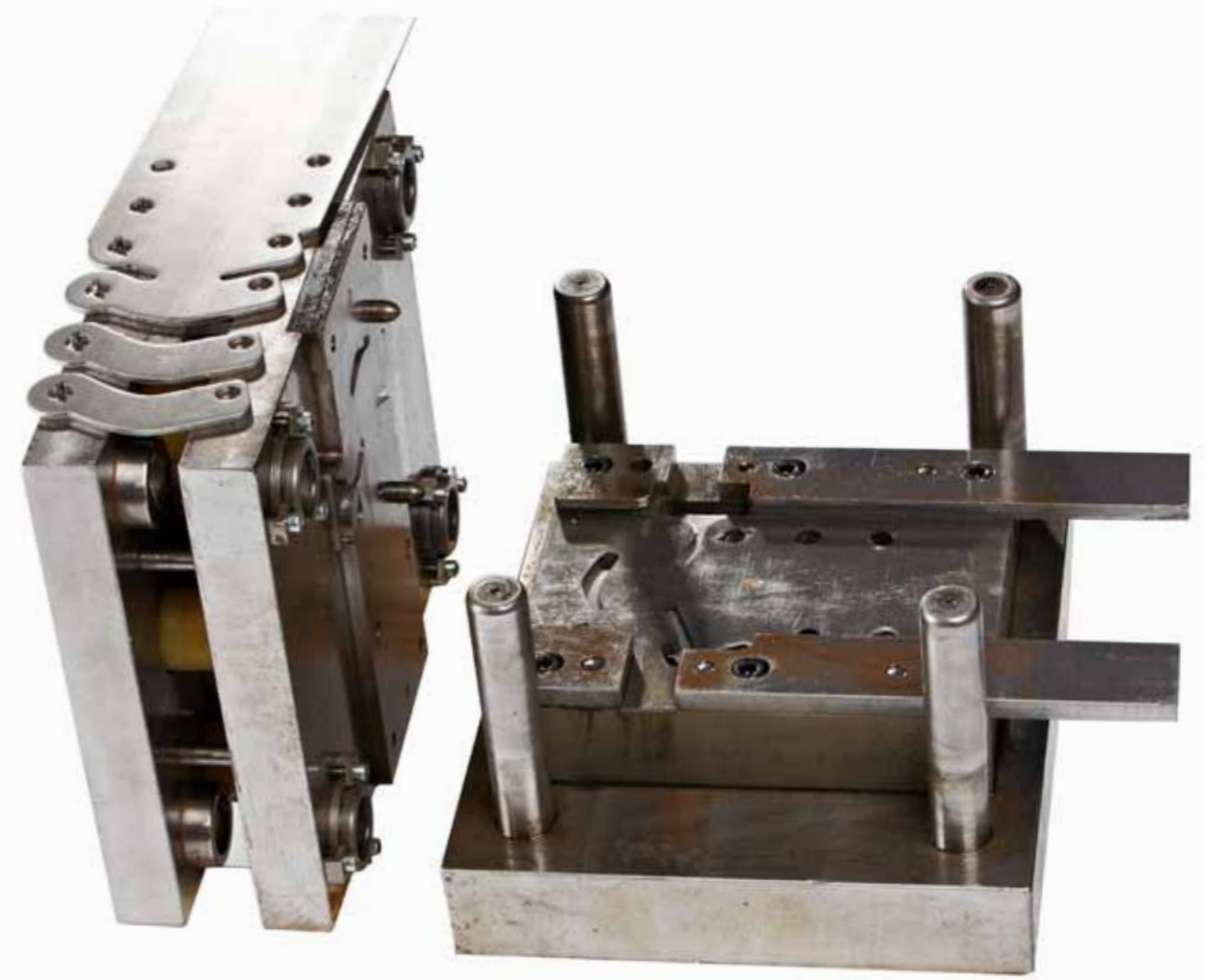
The Officina Borselli Pouches was founded in the early '70s as a small family business, already specialized in the production of printed sheet metal and at the same time in the machinery.

Over the years, the trust of customers, for some of which the company is still a current partner, has allowed us to increase the production capacity, with a resulting expansion of spaces and a continuous modernization of the machinery.

From 2008 the Officina Borselli is certified by ISO9001, a further guarantee to support future challenges, while staying competitive in an increasingly demanding and more selective market and offering quality products, in line with the expectations of the customer.

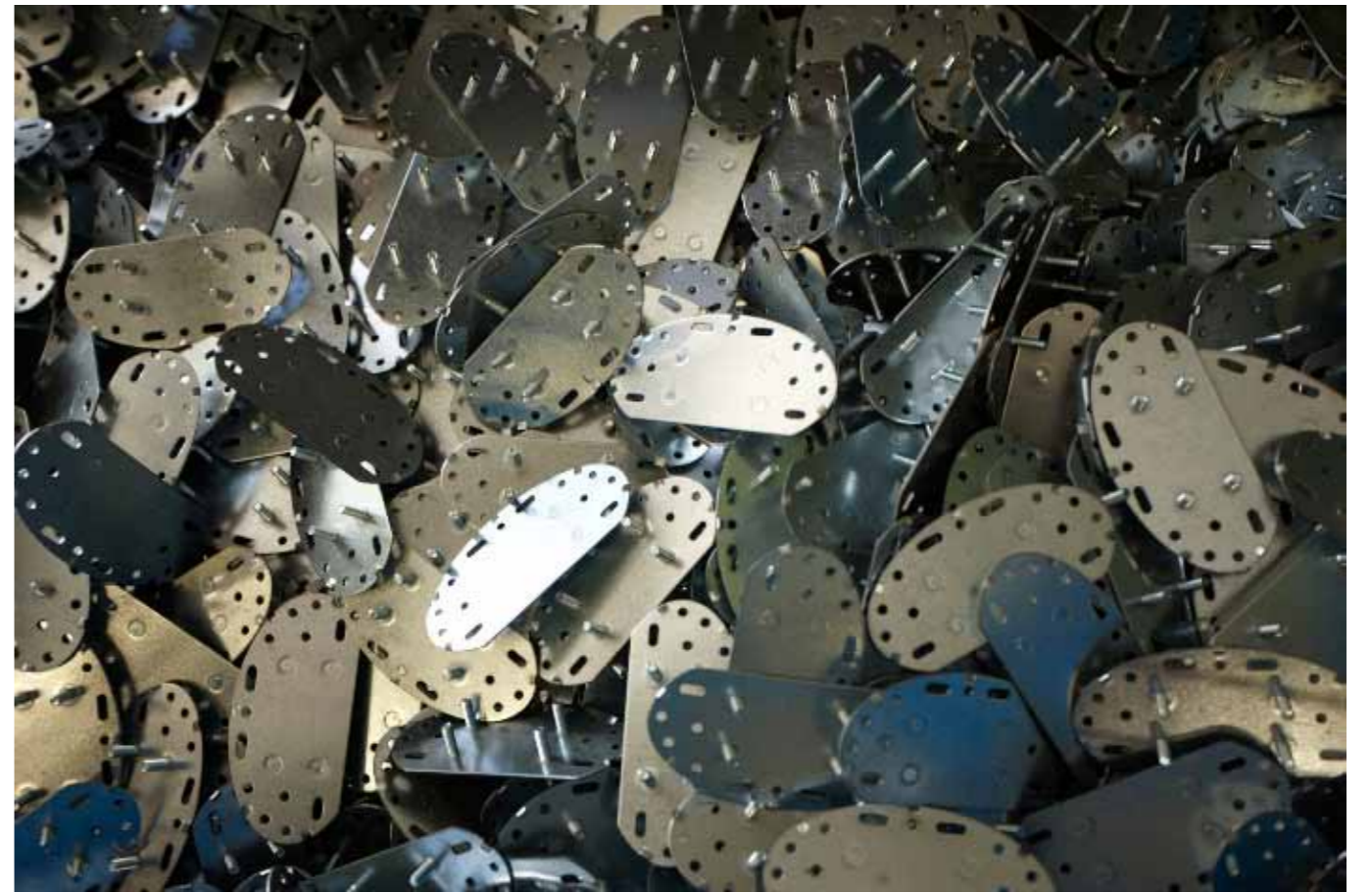




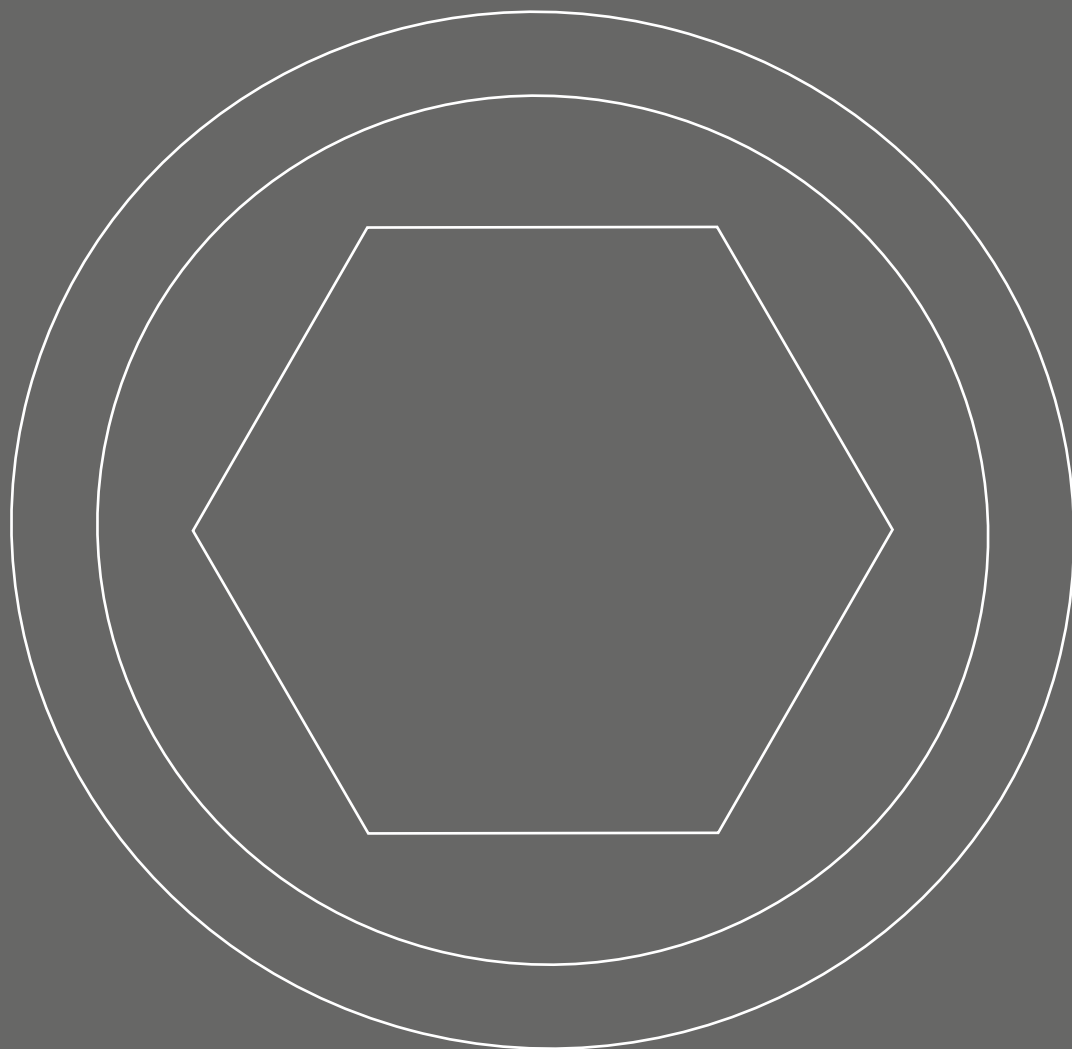












OFFICINA BORSELLI
STAMPAGGIO E FABBRICAZIONE STAMPI
Via del Ponte Lungo 6 - 50019 S.FIORENTINO - FIRENZE - ITALY
T +39 055 4211847 - F +39 055 4200030
www.officinaborselli.it - info@officinaborselli.it
P.IVA 04777030489